



Taha Kimia TajhizCo.



Core Lab



Foam Cell – FC 200-200 Datasheet

Enhanced Oil Recovery (EOR)



Foam Cell – FC 200-200



General Features

Emulsions are the main problem on field production, especially if several wells productions are connected together on the separator or pipeline.

Specifications	
Cell Volume	200 ml
Working Pressure	200 bar
Working Temperature	From -20 to 150°C

The FC 200-200 Rig is designed for inhibitor research measuring after real dynamic production of several phases' mixtures the time of separation of the phase characteristics and inhibitors.

It's possible, with the synoptic or with the electric cabinet, to control the pumps (pressure regulation, constant flow rate, constant volume), to control the temperature of climatic air bath, see the values of the different parameters (pressure, temperature, etc.), and watch the HP Foam cell (only with the synoptic).

CCD Video Camera System Specifications	
Video Signal	Numerical
Digital Zoom	x 10
Working Distance	10 to 800 mm
Pictures	JPEG , 1392 x 1040

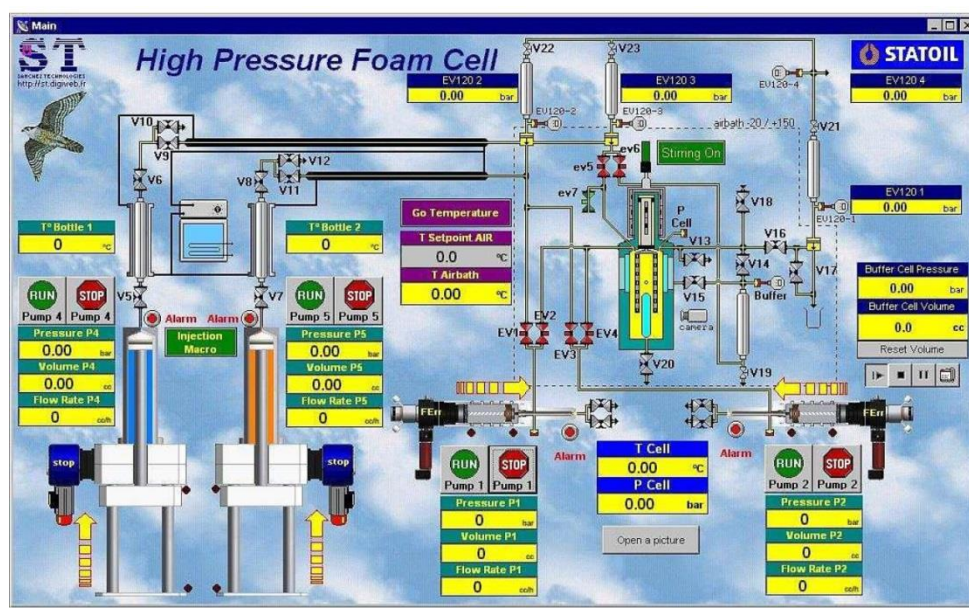


Foam Cell – FC 200-200

This equipment is composed of following items:

- Sapphire Cell
- CCD Video Camera System
- Climatic Air Bath
- Double pump with free piston injection bottles
- Gas Booster
- Injection Inhibitor Pump
- Control Cabinet

Example of synoptic



Double Pump



Sapphire Cell