



Taha Kimia TajhizCo.



Core Lab



Test Inhibitor Scale Rig TISR 700 Datasheet

Reservoir Fluid Analysis-PVT \
Special Fluid Analysis



Test Inhibitor Scale Rig – TISR 700



General Features

Calcium carbonate scale formation is a major problem in oil or gas production. In order to prevent this phenomenon, our equipment enables study of scale formation with a direct observation thanks to the sapphire cell, and also with a differential pressure plugging pipe system.

Specifications	
Working Pressure	Up to 700 bar
Working Temperature	Ambient to 200°C
Sapphire Cell Volume	100 ml
Pressure Accuracy	0.05%
Temperature Accuracy	0.1%

This equipment is composed of following items:

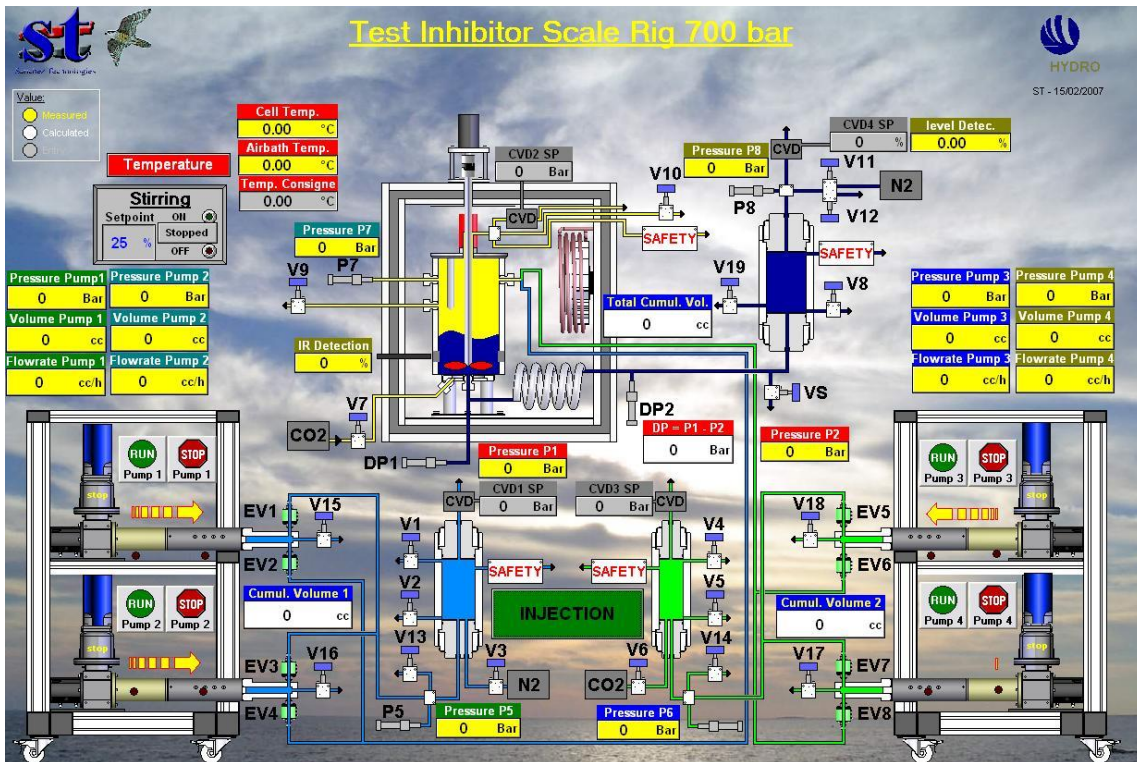
- Window Sapphire Cell
- Stirring by Magnetic Coupling
- Double Injection Pump
- Water Mixture Cell (20 bar / 500 ml)
- Inhibitor Mixture Cell (20 bar / 2000 ml)
- CCD Camera for Full Visibility
- Calibrated Pressure Sensor and Temperature Sensor
- CVD valves for constant pressure control in continuous flow



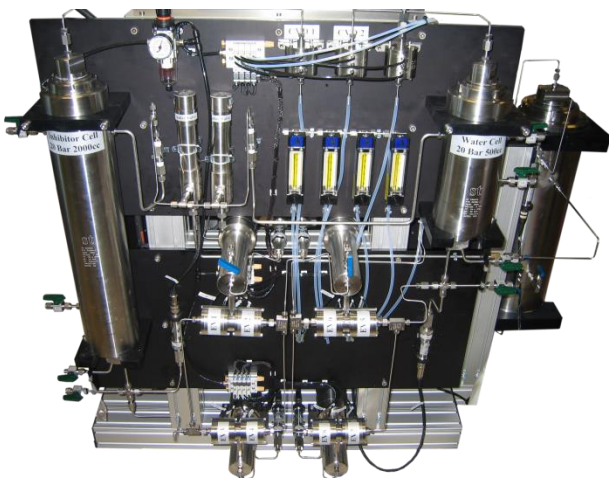
Test Inhibitor Scale Rig – TISR 700

The equipment can be controlled with a synoptic (FALCON® software) or with electric cabinet and log the values of the different parameters (pressure, volume, temperature, flow rate ...).

Example of synoptic



Cells and Valves



Sapphire Cell with Stirring

