



Taha Kimia Tajhiz Co.



Core Lab



S/DC 5500 Datasheet

Extreme Conditions/Diamond Anvil Cell Driving System



S/DC 5500



The S/DC 5500 is revolutionary equipment which combines traditional booster characteristics with automatic volumetric piston pump.

Its automated system enables to work in two different modes (injection or collection). Like this, while performing high speed continuous flow ramp, it's possible to work in constant pressure mode.

Actually, the small dead volume permits an accurate regulation in pressure ramp with a reduction of rearming time in continuous flow mode.

Advantages:

- Full Automated System
- Continuous Flow until 0.45L/min
- Injection and Collection Work
- Working pressure until 4500

This apparatus is composed of following components:

- Control and data acquisition by Falcon® Software
- 2 Automatic constant volume valves
- 9 Interchangeable bodies and pistons
- Air supply on 6/8 bar network
- 7 Meters retractor
- Power supply 380 volts 10 meters retractor
- Multi-fluid 10L reservoirs (water, oil, solvent,...)



S/DC 5500

Range S-/DC S- /-S	Capacity (ml)	Pressure (bar)	Jack Ø (mm)	Flow Rate (ml/min)
6 / 3000	6	3000	13	100
3.1 / 4500	3.1	4500	9.4	47

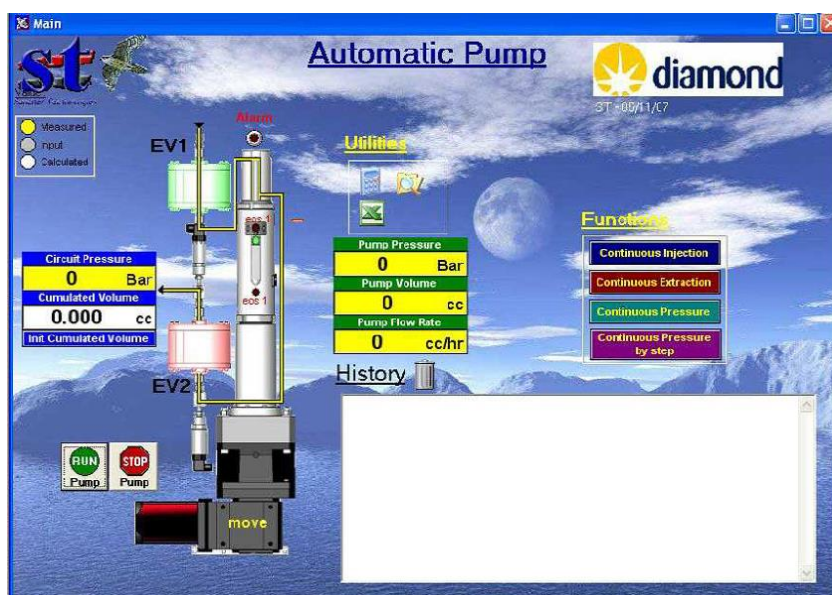


PC Control



Digital Display with Manual Control

Example of Synoptic



Non contractual pictures and data