



Taha Kimia TajhizCo.



Core Lab

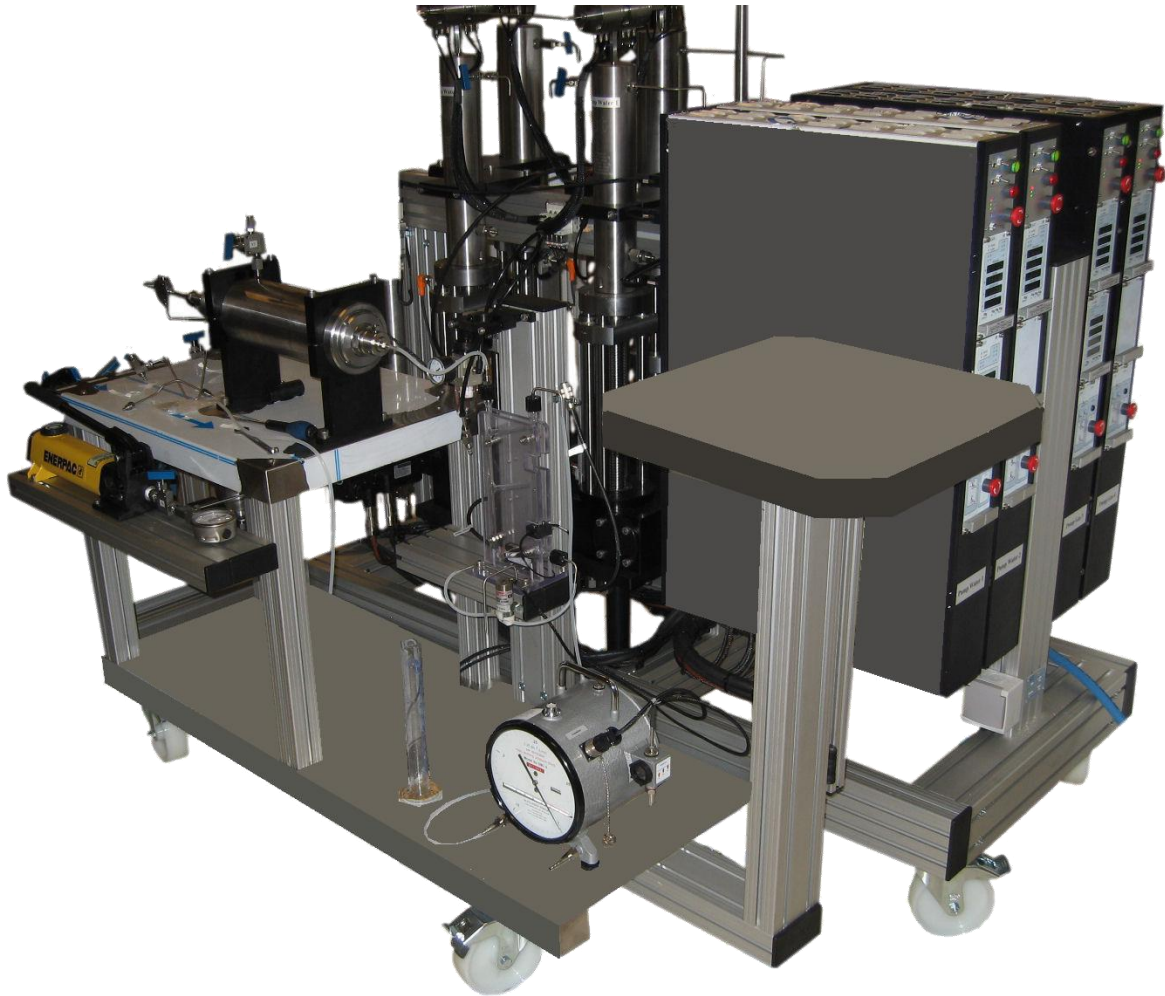


Gas/Liquid Relative Permeability System RPS 700 RT Datasheet

**Special Core Analysis Laboratory (SCAL)/
Relative permeability**



Relative Permeability System – RPS 700 RT Gas/Liquid



General Features

Our RPS Room Temperature is able to carry out unsteady-state gas/liquid relative permeability experiments using constant pressure method under room temperature.

The system includes two double displacement pumps, overburden pressure control, core holder, parameter metering, valves and pipes.

Specifications	
Working Pressure	0 to 700 bar (10 000 psi)
Working Temperature	Ambient
Displacement Flow Rate	0.0001 to 15 ml/min
Core Diameter	1" and 1 ½"
Core Length	1" to 3" (Adjustable upon request)
Wetted Materials	Hastelloy
Working Fluids	Brine, Oil, Solvent, gas, Simulation Fluid

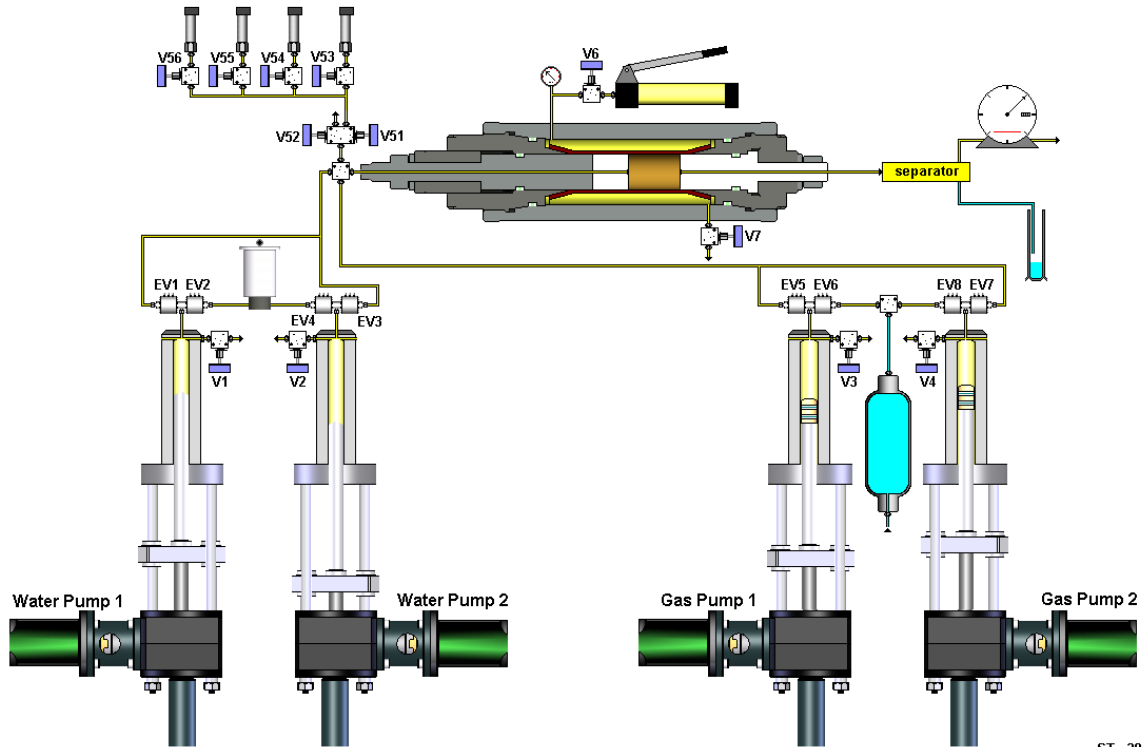


Relative Permeability System – RPS 700 RT Gas/Liquid

Our software Falcon is used for data acquisition and the displacement pump control. You can see below a diagram of the system.



RPS RT - Liquid/Gas



ST - 2008

Bottles

Wet Rotary Gasmeter

3 Phases Separator

